



SAFE-SERV™ CONDIMENT SYSTEM

Hands-Free Foot Operated

The Safe-Serv* foot operated condiment system by Lakeside and Nemco is ideal for high volume self-serve or kitchen condiment dispensing. Accurately dispense condiments on hot dogs or hamburgers, or in back of the house applications. Since pumps are foot operated, dispensing is hands-free for safer use and reduced sanitation labor. With an adjustable serving shelf, stations are designed to operate with Nemco condiment dispensers, that would be normally hand operated.

nemco® FOOD EQUIPMENT

Accepts Nemco hand pump condiment dispenser models 10950, 10950-1, 10951, and 10951-1 (Sold separately, not available from Lakeside.)



Model 159870N-1
(Shown with Model 10950-1 dispensers.)

Model Information

Model	Accommodates	Overall Width*	3" Wheels	Ship Weight
159867N-1	1 Dispenser	16"	Yes	72 lbs
159868N-1	2 Dispensers	26"	Yes	105 lbs
159869N-1	3 Dispensers	36¼"	No	140 lbs
159870N-1	4 Dispensers	46½"	No	170 lbs

* Includes floor base.



* Patent Pending

Over for additional information.

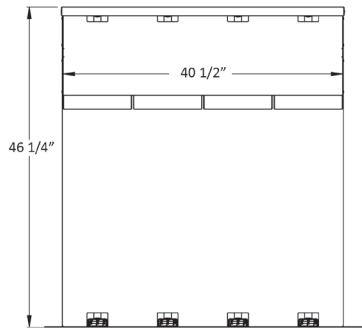
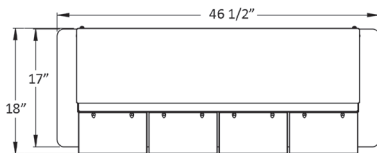
SAFE-SERV™ CONDIMENT SYSTEM

Hands-Free Foot Operated

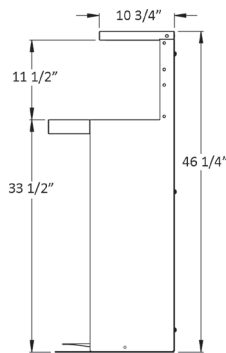
DESIGN FEATURES

- Converts hand operated pumps to foot operated
- All-welded stainless steel heavy-duty construction is easy to clean and sanitize
- No power required - fully mechanical operation
- Accommodates Nemco dispensers, powered by Asept, providing a smooth, easy-to-activate pump that delivers an accurate, no-drip portion
- Field-adjustable dispenser shelf accommodates four Nemco hand operated dispenser models*
- Single-, two-, three-, and four-pump stations available
- Single- and two-pump models move easily on 3" fixed wheels
- Floor-saving compact 18" depth
- Convenient overhead storage shelf

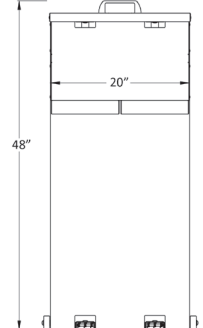
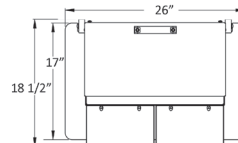
* Nemco models 10950, 10950-1, 10951, and 10951-1.



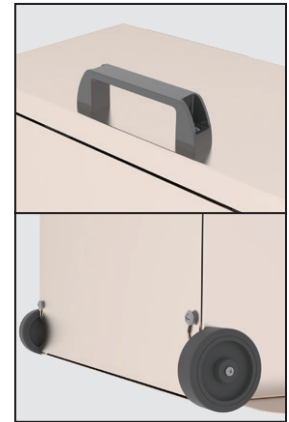
Model 159870N-1



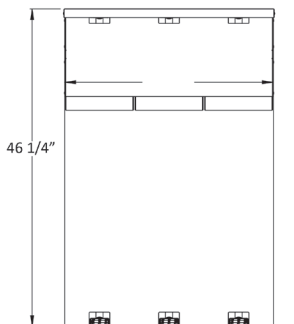
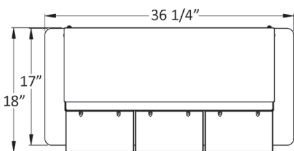
Side View



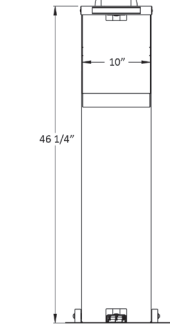
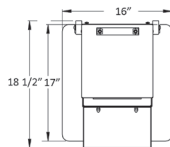
Model 159868N-1



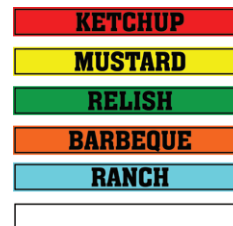
Top Handle & 3" Wheels on Models 159867N-1 & 159868N-1



Model 159869N-1



Model 159867N-1



Condiment labels included, plus blank.



Condiment Pumps By
nemco® FOOD EQUIPMENT



4900 West Electric Avenue • West Milwaukee, WI 53219 U.S.A.